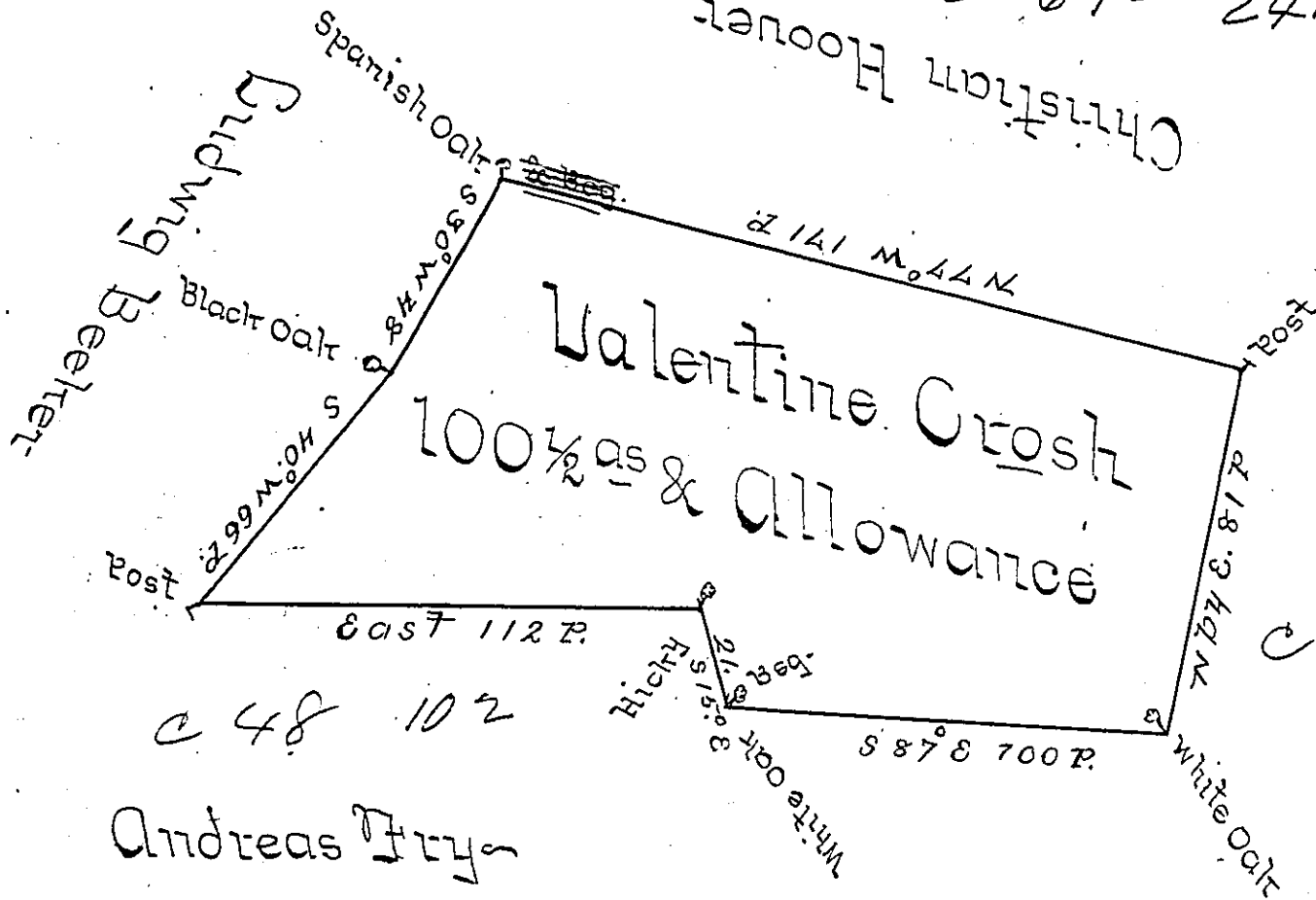


C-64-241

Christian Hoover



C 48 102
Vacant
C 50-130

Andreas Fry

Martin Hoogman

A Draught of a Tract of Land situate in Hempfield Town-
 ship Lancaster County containing one hundred Acres &
 an half & the Allowance of six Acres & Cent, for Roads
 & Highways Surveyed the 25th day of February 1747 for
 Valentine Cross in pursuance of a Warrant bearing Date
 the 8th day of January 1747 by Tho^s Cookson Esq^r late
 D.S. of Lancaster County, Extracted from his Field Book
 & calculated by Geo. Stevenson one of the
 Exec^{rs} of Tho^s Cookson Esq^r
 Deceased.

To Nicholas Scull Esq^r
Survey General ~

IN TESTIMONY that the above is a copy of the original remaining on file in
 the Department of Internal Affairs of Pennsylvania, made
 conformably to an Act of Assembly approved the 16th day of
 February, 1833, I have hereunto set my Hand and caused
 the Seal of said Department to be affixed at Harrisburg,
 this seventh day of August 1900.

James W. Latta
 Secretary of Internal Affairs,